



**Before You Start:**

Please familiarize yourself with all the steps before beginning assembly.

**Compatibility Info:**

This Cab System is designed to work with other Seizmik branded Accessories for the John Deere 1025R Sub Compact Tractor as well. Please note Seizmik cannot guarantee fitment with other branded aftermarket products. Please research installation details thoroughly on our products & others when trying to combine different branded accessories.

Seizmik makes Windshields, Mirrors, Cab Systems, Light Bars, Storage Boxes, Hood Racks, and other great accessories for UTV's to maximize the vehicles usefulness. To help you do what you do better.

If you have any questions, comments, need assistance, or are missing parts, please call 1-866-838-3366 xt.110 between 9:00AM and 5:00PM EST. Or email us at [support@seizmik.com](mailto:support@seizmik.com). Visit [www.seizmik.com](http://www.seizmik.com) for more information on our products.

**Installation information:**

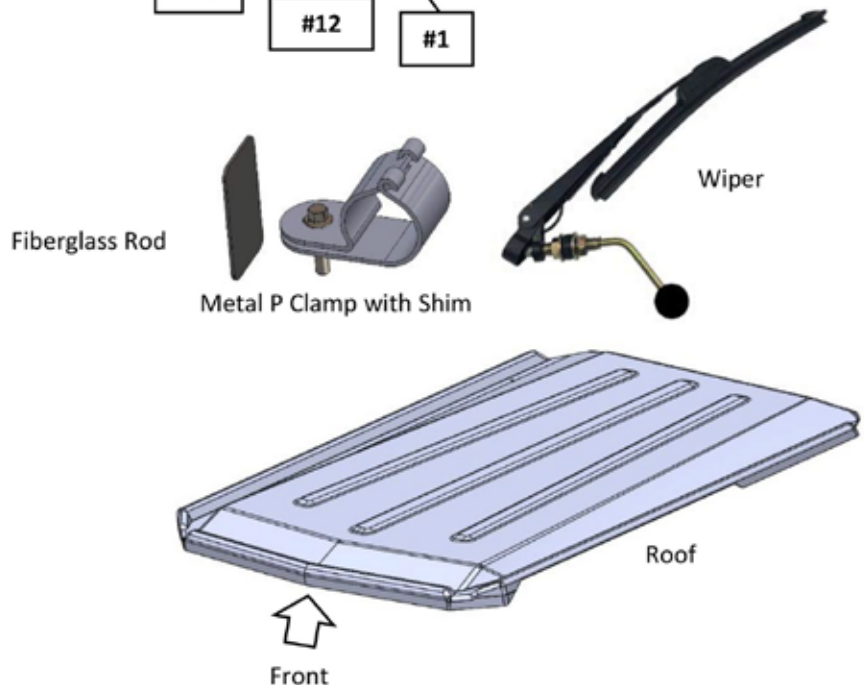
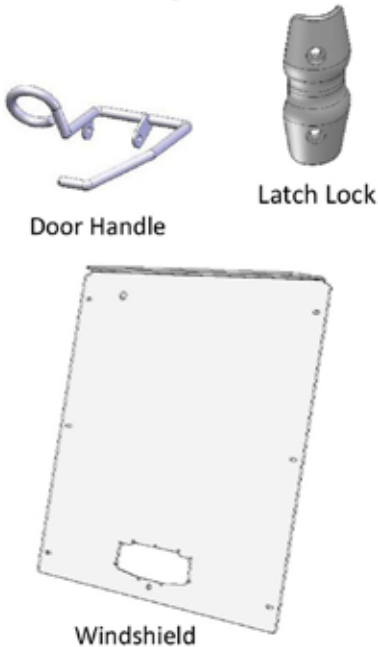
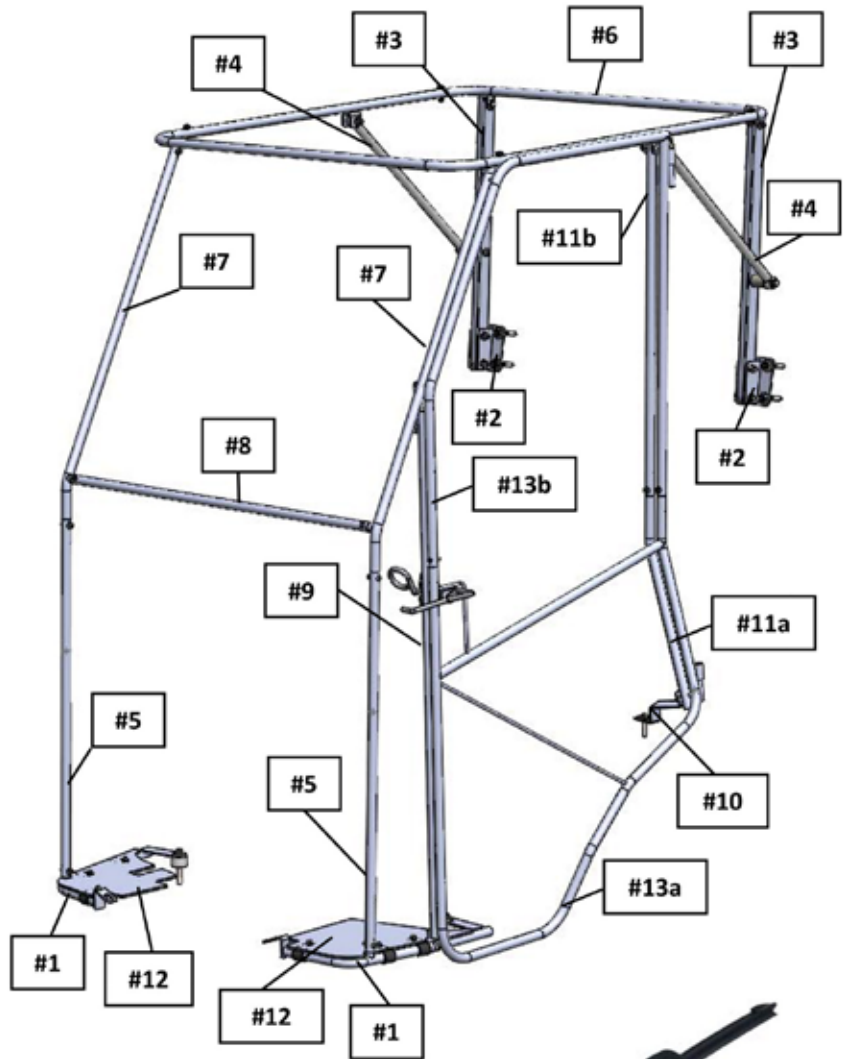
- Approximate installation time: 1 – 1½ hours
- This product is easiest to install with: 1-2 people

# John Deere 1025R Sub Compact Tractor Cab Installation



## Parts List

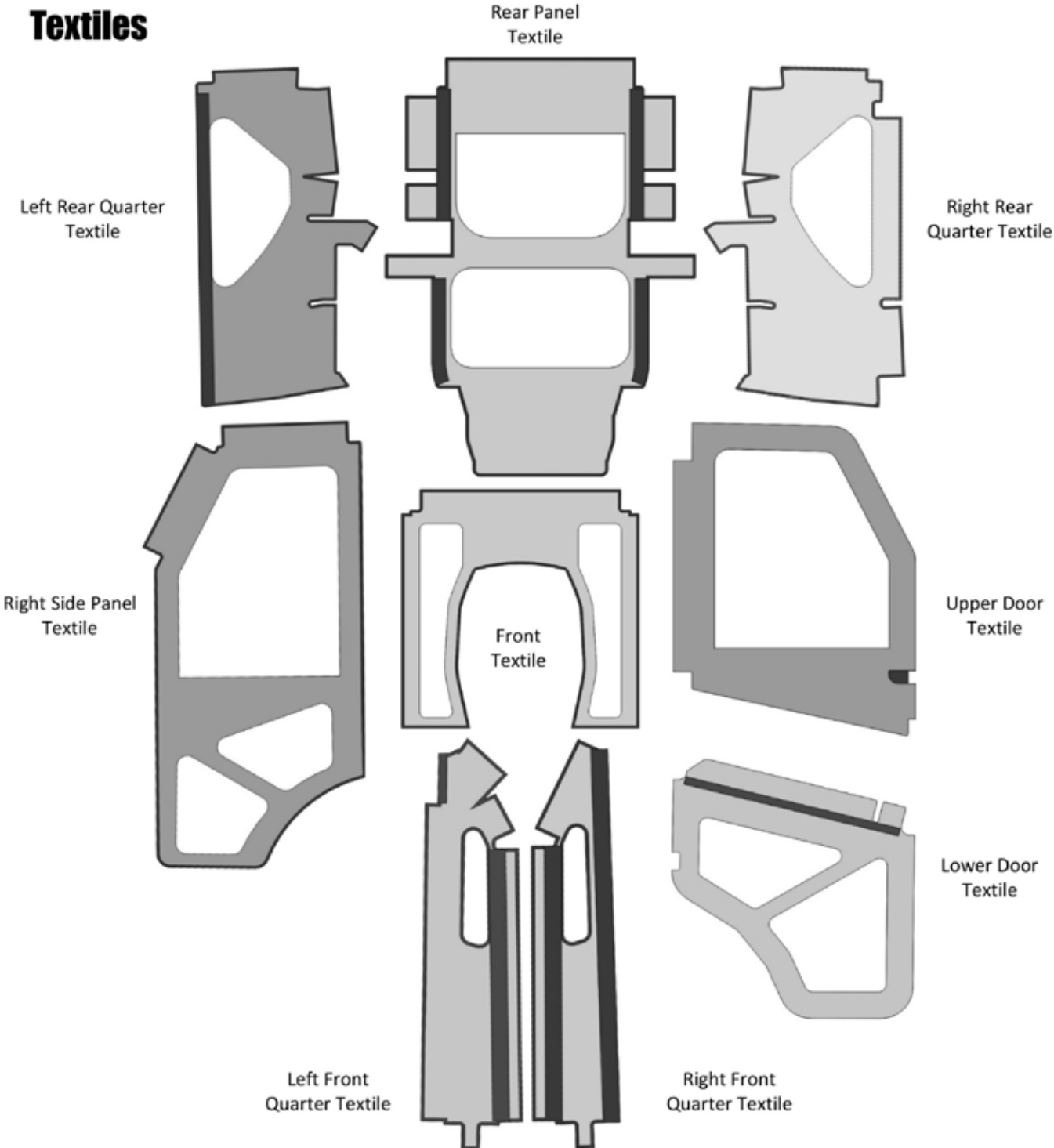
Parts	QTY
#1-Foot Pan Brackets	2
#2-Rops Mounting Brackets	2
#3-Rops Uprights	2
#4-Stay Rods	2
#5-Lower A Pillar Tubes	2
#6-Roof Hoop	1
#7-Upper A Pillar Tubes	2
#8-Windshield Cross Bar	1
#9-Door Close Tube	1
#10-Fender Bracket	1
#11a-Lower Door Hinge Tube	1
#11b-Upper Door Hinge Tube	1
#12-Foot Plates	2
#13a-Lower Door	1
#13b-Upper Door	1
Non Numbered Parts	
-Door Handle	
-Latch Lock	
-Fiberglass Rod	
-Roof	
-Windshield	
-Plastic Knobs (11)	
-Wing Nuts (11)	
-Wiper	
-Metal P Clamp with Shim	



# John Deere 1025R Sub Compact Tractor Cab Installation



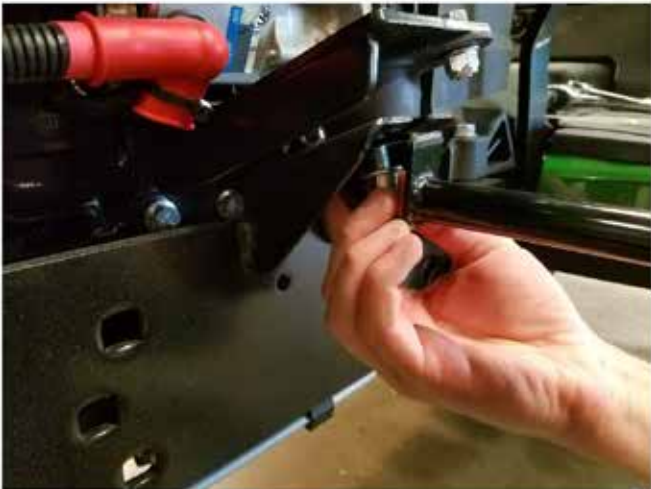
## Textiles



# John Deere 1025R Sub Compact Tractor Cab Installation



1. Remove the forward most foot pan bolt and place one of the shorter spacers included in the cavity.



2. Remove the nut from the bottom of the engine mount bolt and place the bent tab of the driver foot pan bracket on the bolt as shown in the pictures above.

# John Deere 1025R Sub Compact Tractor Cab Installation



3. Place rear tab of driver foot pan bracket over the spacer and install with new m10x65mm flange bolt. Tighten engine mount nut and rear tab bolt now.



4. Remove the forward most foot pan bolt and place one of the shorter spacers included in the cavity.



5. Remove the nut from the bottom of the engine mount bolt and place the bent tab of the passenger foot pan bracket on the bolt as shown in the pictures above.



6. Place rear tab of passenger foot pan bracket over the spacer and install with new m10x65mm flange bolt from. Tighten engine mount nut and rear tab bolt now.

# John Deere 1025R Sub Compact Tractor Cab Installation



7. Attach the rops mounting brackets (#2) using the supplied U-bolts just below the pivot of the rear hoop. Ensure that the arced slots are at the top as shown.



8. Ensure both sides are secured at the same height.



9. Install both Rops Uprights (#3) as shown with the hole on side facing outward. Snug up the 2 M8x 40 flanged bolts just enough so that the Upright may still pivot forward and back in the arced slot. Make sure the nuts are facing the inside of the vehicle. These will be tightened later.



10. Install stay rods (#4) on both sides using the long spacers and supplied M8x80 Flange bolts from as shown in the picture above. Stay rods should be bolted on the outside face of the Rops Upright.

# John Deere 1025R Sub Compact Tractor Cab Installation



11. Hang Roof (#6) hoop by attaching the rear tabs on the inside of the rops uprights using m8x35 flange bolts. Orient bolts with flange nuts on the inside of the bracket.



12. Roof hoop (#6) tabs should be on the inside of the rops uprights (#3) as shown above.



13. On the "drivers" (left) side, attach stay rod (#4) to roof hoop bracket in the rear hole using m8x40 flange bolt as shown. Button head must be facing outward to avoid contact with door.



14. On the "passenger" (right) side, attach stay rod (#4) to roof hoop bracket in the hole using m8x40 flange bolt as shown. Button head must be facing outward to avoid interference with textile panel.

# John Deere 1025R Sub Compact Tractor Cab Installation



15. Attach both Lower A Pillar tubes (#5) as shown with the holes in the highest position possible and facing the rear of the tractor. Use the m6x25 button head bolts to attach to foot pan brackets (#1). Button head must be facing outward.



16. Install A Pillar tubes (#7) with the sleeve tubing stubs facing towards the inside of the tractor. Slide upper portion of the A pillar tubing (#7) into the front stubs of the roof hoop (#6) and attach with m6x25 button head bolts. Button head must be facing outward with nuts on the inside to avoid interference with textiles.



# John Deere 1025R Sub Compact Tractor Cab Installation



17. Install the windshield cross bar (#8) between the 2 A pillar tubes (#7) using m6x25 button head bolts. Button head must be facing outward.



18. Line up the long tab of the Door Close tube (#9) with the hole in the "driver" (Left) side A Pillar Tube (Orange #7). Tabs of the Door Close Tube (#9) should be on the inside as shown.



19. Attach upper tab of the Door Close Tube (#9) to the A Pillar Tube (#7) with the longer m6x30 button head bolt as shown. Button head must be facing outward.



20. Attach the Door Close Tube (#9) to the driver foot pan bracket (#1) with the longer m6x30 button head bolt as shown. Button head must be facing outward.

# John Deere 1025R Sub Compact Tractor Cab Installation



21. Remove the bolt in the "driver" (left) side fender cover in the area shown.



22. Install the fender bracket (#10) in the orientation shown with the supplied M8x40 flange bolt. No spacer is needed for this bracket.



23. Assemble the 2 door hinge tubes (#11a & #11b) with an m6x25 button head bolt and locate the lower hinge tube with the hole in the fender bracket (#10) as shown. Attach with m6x30 button head bolt. Button heads must be facing outward to avoid contact with door.



24. Locate the upper portion of the door hinge tube (#11) with the roof bracket in front of the stay rod (#4) as shown in the picture above. Attach with m8x35 button head bolt. Button head must be facing outward to avoid contact with door.

# John Deere 1025R Sub Compact Tractor Cab Installation



25. At this point the steel frame structure should be snugly bolted together while still allowing the roof hoop (#6) structure to pivot forward and back on the rear uprights (#3).



26. With the frame in place install the pedal side foot plate (#12) using three .75" plastic p-clamps and m6x20 bolts. Do not fully tighten bolts yet. Leave loose so that textile installation will be easier.



27. Next, install the left side foot plate (#12) using three .75" plastic p-clamps and m6x20 bolts. Orient the clamps around the tube as shown below with the foot plate on top.



28. Attach the upper (#13b) and lower door (#13a) halves using m6x25 bolts and mock up the door by sliding the hinge pins into the barrels on the hinge tube (#11). At this point, pivot the uprights (#3) and roof hoop (#6) to best line up the frame with the door. Tighten down all bolts. Remove Door and continue installation.

# John Deere 1025R Sub Compact Tractor Cab Installation



29. Hang the left side front quarter textile as shown and using the flaps, wrap the textile around the frame structure and attach with Velcro.



30. Hang the right side front quarter textile as shown and using the flaps, wrap the textile around the frame structure and attach with Velcro.

# John Deere 1025R Sub Compact Tractor Cab Installation



31. Attach the lower flap of the right side quarter panel textile to the foot pan bracket (Green #12) as shown. Tighten down foot plate bolts at this time.



32. Attach the front textile to the frame structure and the quarter panels using Velcro as shown.



33. The bottom of the front textile is additionally secured to the frame of the tractor using the hooks on the elastic cord on both sides. See picture above. The elastic goes between the frame and the Foot pan bracket (#12) on either side.



34. Clean the roll over bar in the area shown with alcohol and place a 12" strip of the supplied adhesive Velcro from the middle of the orange tail light downward on both sides. This will aid in securing the rear panel to the tractor.

# John Deere 1025R Sub Compact Tractor Cab Installation



35. Remove the 2 bolts behind the rear seat in the circled area. Do not discard. These bolts will be used in step 41.



36. Hang the rear panel in the orientation shown by first wrapping the upper flap around the rear of the roof hoop (#6) between the rops and the steel frame structure.



37. If equipped, the rear tail light assemblies will need to be removed for this part of the installation. They will be reinstalled later.



38. Removing the toolbox will make the next few steps of the installation easier.

# John Deere 1025R Sub Compact Tractor Cab Installation



39. Continue from the top, wrapping the side flaps of the rear panel around the rectangular Rops Uprights (#3).



40. The flaps should wrap around the Rops Uprights (#3) as shown above.



41. There are 2 grommets at the bottom of the rear panel that should line up with the bolt holes from Step 34. Orient the grommets as shown.



42. Reinstall the bolts removed in step 34 through the grommets at the bottom of the rear panel as shown above.

# John Deere 1025R Sub Compact Tractor Cab Installation



43. As done with the rear panel, start by hanging the right rear quarter panel from the top roof hoop (#6). Secure to roof hoop with flaps so that it hangs as straight as possible.



44. With the quarter panel hanging straight, clean the fender with alcohol. Line up the supplied adhesive Velcro with the Velcro at the bottom of the quarter panel and adhere the adhesive Velcro to the tractor fender.



45. With the quarter panel now secured at the top and bottom, secure the remaining flaps around the roll bar structure to the rear panel as shown. The wires for the tail lights should line up with the space between the flaps.



46. The flaps of the quarter panel should line up with the Velcro on the rear panel as shown above.



# John Deere 1025R Sub Compact Tractor Cab Installation



47. As done with the right side rear quarter panel, start by hanging the left rear quarter panel from the top roof hoop (#6) Secure to roof hoop with flaps so that it hangs as straight as possible.



48. With the quarter panel hanging straight, clean the fender with alcohol. Line up the supplied adhesive Velcro with the Velcro at the bottom of the quarter panel and adhere the adhesive Velcro to the tractor fender.



49. With the quarter panel now secured at the top and bottom, secure the remaining flaps around the roll bar structure to the rear panel as done right side.

Using a sharp object, poke a hole in the now tight textile for the upper tail light mounting bolt as shown in the picture above.



50. With both holes made, re install the tail lights using the factory bolts.

# John Deere 1025R Sub Compact Tractor Cab Installation



51. Take the right side panel and start by securing the top of the panel to the roof hoop (#6). Work down the panel attaching it to the Velcro on the front and rear quarter panels.

Note: Unzipping the window allows you to press together Velcro from inside and outside of the vehicle.



52. With the right side panel hanging straight, clean the fender with alcohol. Line up the supplied adhesive Velcro with the Velcro at the bottom of the panel and adhere the adhesive Velcro to the tractor fender.



53. Install the fiberglass rod into the bottom hole of the Rops Upright (#3) and into the hole of the front lower A pillar tube (#5) as shown in the pictures above. Use the loops on the right side door panel to secure the rod to the panel. This rod is used to bow the right side textiles outward for more clearance when using the hydraulic lever.



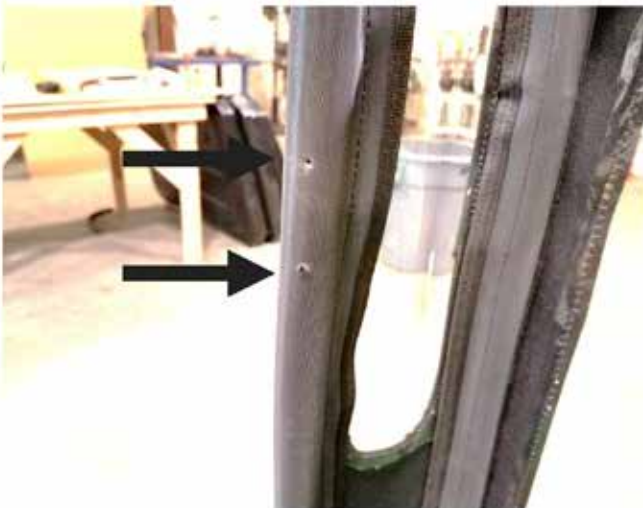
# John Deere 1025R Sub Compact Tractor Cab Installation



54. Place the roof on top of the roof hoop and line up the 4 holes.



55. The 4 holes are located in each corner of the hoop, circled in the picture above. Secure with Plastic knobs and wing nuts. Holes may need to be poked in the textiles to allow the bolts to pass fully through.



56. There are 2 holes located in the left side Lower A pillar tube that must be located and used as a guide for poking holes in the front left quarter panel textile as shown.



57. With both holes made, screw in the latch lock using supplied sheet metal screws in the orientation shown.

# John Deere 1025R Sub Compact Tractor Cab Installation



58. Install upper and lower door textiles as shown. It is easiest to install the bottom portion first so that the top can be pulled down tightly and connected to the Velcro on the arm bar flap.



59. Slide the door back into the door hinge tube (#11).

# John Deere 1025R Sub Compact Tractor Cab Installation



60. Assemble door handle as shown using 1/4x2.5" bolt, 4 1/4 washers, 2 plastic spacers, & nut.

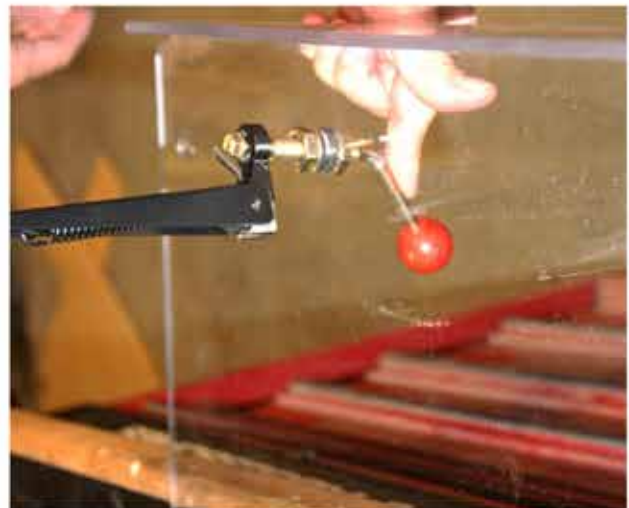
The 2 spacers & 3 washers will go on the interior side of the handle. The 4<sup>th</sup> washer will go on the outside.

Install but do not tighten nut yet. When the textiles are on and the doors are installed, you can swap the washers around to adjust how tight the handle closes. When you are done adjusting, tighten the nut just enough so that the handle is not loose, but will just stay in any position.



61. Windshield installation begins with installing the wiper assembly. Install thru bolt and sealing washers as shown.

Note: The bend of the windshield faces the front of the vehicle.



62. Install handle and wiper assembly to the installed thru bolt assembly done in the previous step.

# John Deere 1025R Sub Compact Tractor Cab Installation



63. Hold the windshield up in position with the upper bend facing forward towards the front lip of the roof.



64. Attach using the 7 plastic clamps and knobs with wingnuts as shown in the picture above. The holes in the windshield are slotted to allow for finer adjustments.



65. With the installation of the windshield, your cab kit is now complete!

# John Deere 1025R Sub Compact Tractor Cab Installation



## Additional Instructions for installation with a Loader



66. Remove the factory hydraulic line retainer from the loader arm (we have seen the factory mount it in two different places).



68. Install the provided metal P-Clamp with rubber shim on the tubular loader frame/stand with the factory hardware in the orientation shown.

# Hardware Index

