



- ▶ 3" Lift Kit
- ▶ Can fit up to 31" tires
- ▶ Zinc plated for extreme durability

Please read instructions and view illustrations before installing

PARTS DIAGRAM

**Front Lift Bracket
(4ea) 73U**



**Rear Lift Bracket
(4ea) 73V**



**Front Spring
Spacer (2ea) 45Y**



**Rear Spring
Spacer (2ea) 58Z**



**10mm x 60mm Bolt
(10ea) MCS1060**



**10mm Lock
Nut (10ea)
MLN10-1.5**



**10mm
Washer (16ea)
MFW10**



Spacers



**18T(2ea)
4Y (2ea)
4X (2ea)**

FRONT LIFT INSTALLATION

When referring to left and right positions during the installation process, it is from the seated position

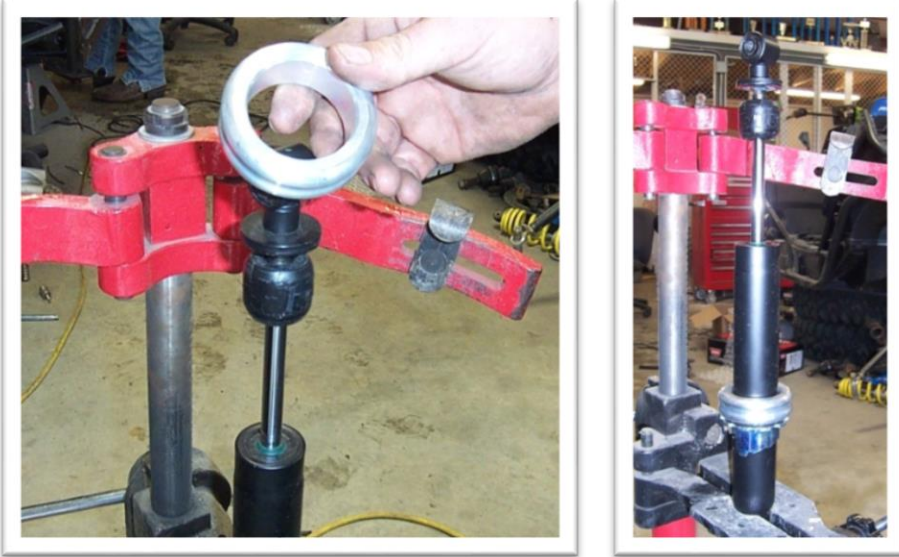
1. Place transmission in park. Place jack under center of front end and lift until front wheels clear the ground. Be careful to properly secure and support so that A-arms and shocks can droop to full extension.
2. Remove front wheels and front shocks from the UTV.
3. Disconnect and remove the shock.
4. **Spring Spacer Installation: (You will also use these same steps for the rear spring spacer installation)**
 - a) For the next step you will need a spring compressor!!! You cannot install the spring spacers without a spring compressor.
 - b) Place the shock in the compressor or attach the compressor so that you can compress the spring and remove the retaining clip that holds the springs in place.
 - c) Remove the clip.



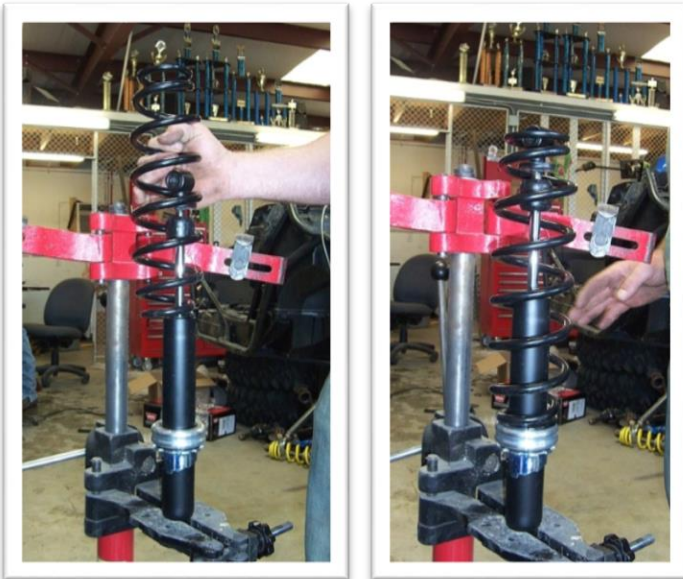
-
-
-
- d) Remove the spring.



e) Slide the spring lift bracket (45Y) onto the shock.



f) Place the spring back on the shock.



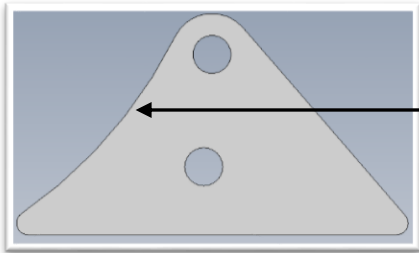
g) Compress the spring and place retaining clip back on the shock.



5. Attach the upper end of each shock back on the UTV. In the next steps you will be installing the front lift brackets.

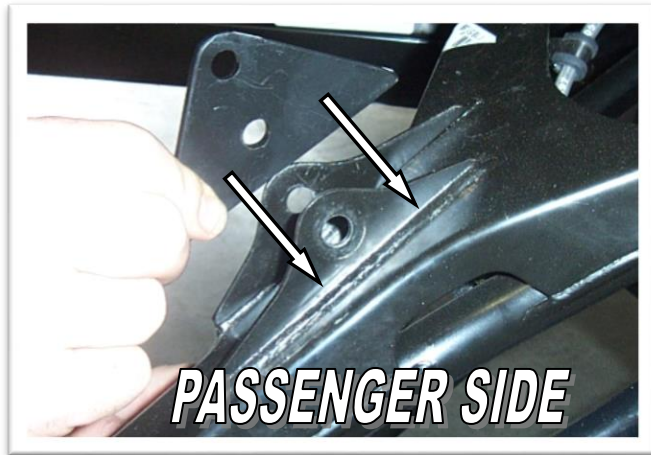
6. Front Lift Bracket Installation:

- a) When installing the front lift brackets make sure to note the direction of the brackets.

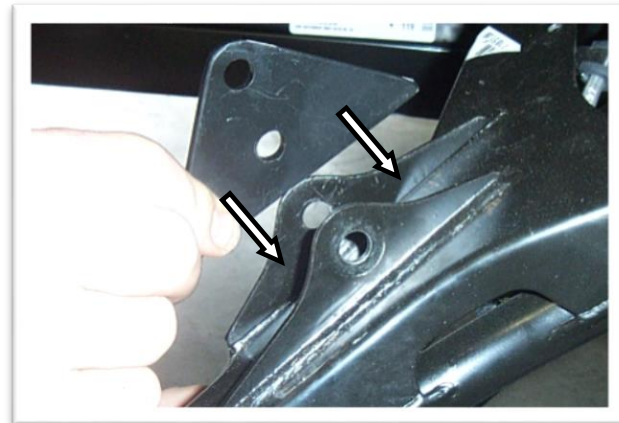


This curved edge will face in the direction of the hub assembly.

- b) You will place a lift bracket (**73U**) to the outside of the outer shock mount tab. It needs to be on the side that faces the front of the UTV.



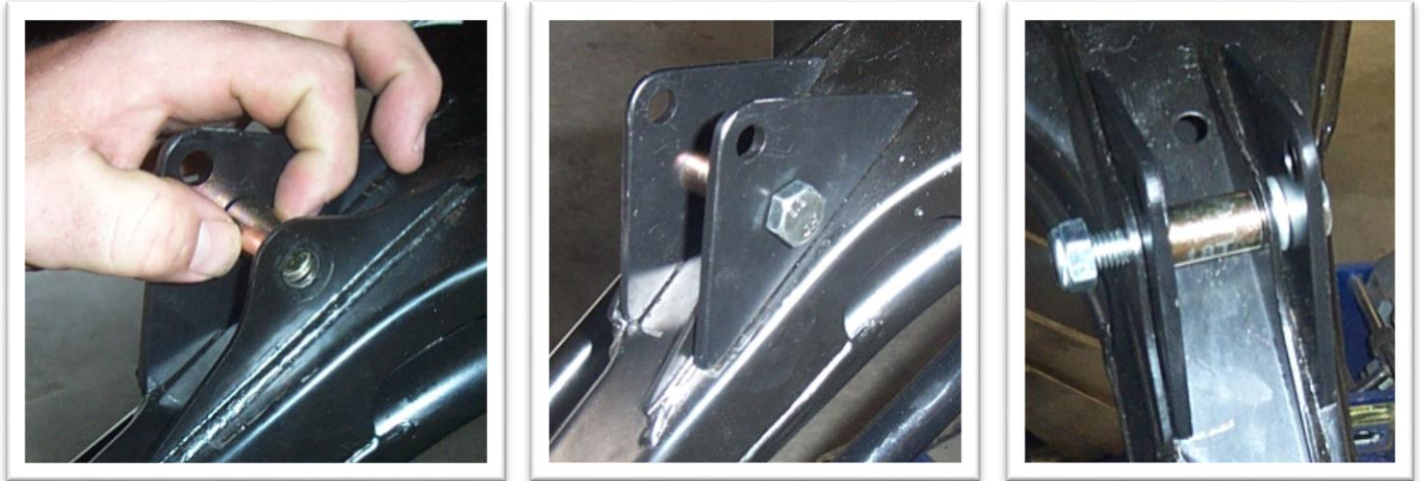
- c) Another bracket (**73U**) will need to be placed on the inside of the inner shock mount tab.



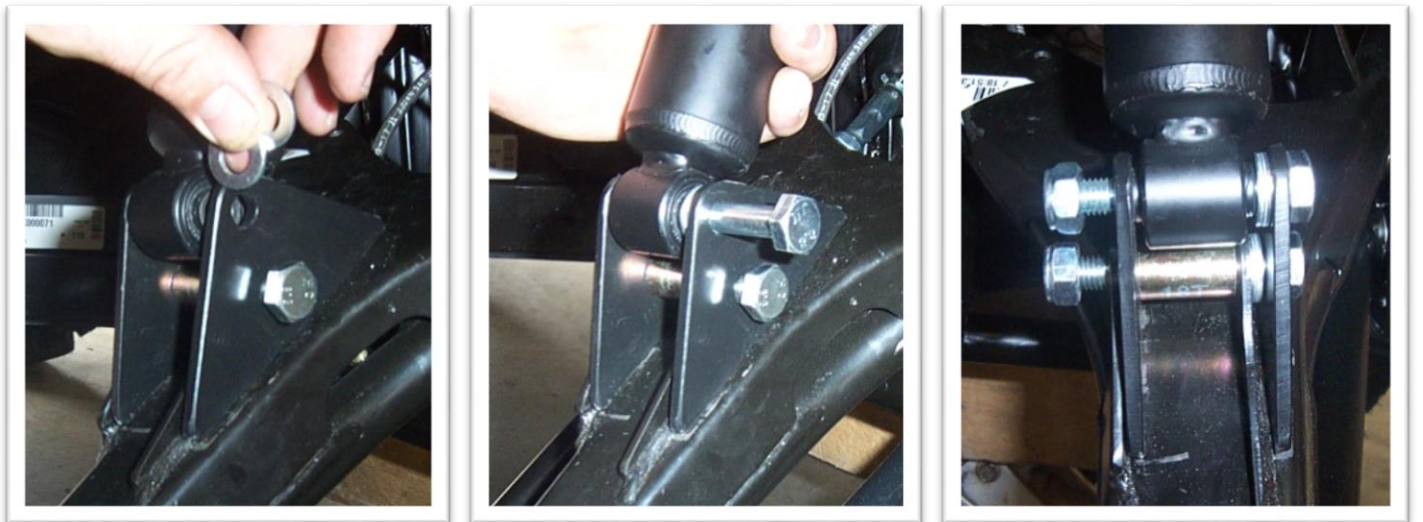
- d) Insert one (**10x60mm hex bolt**) through the lower bracket hole. Then place two (**10mm flat washers**) on the bolt.



- e) Now place the spacer (**18T**) between the shock mount tabs and push the bolt all the way through. Attach with a (**10mm lock nut**).



- f) Let the shock down into resting position and align with the upper bracket holes. Place two (**10mm flat washers**) between the shock eye and the bracket and slide a (**10x60mm bolt**) through. Attach with a (**10mm lock nut**).



7. Repeat steps for the opposite side.



REAR LIFT INSTALLATION

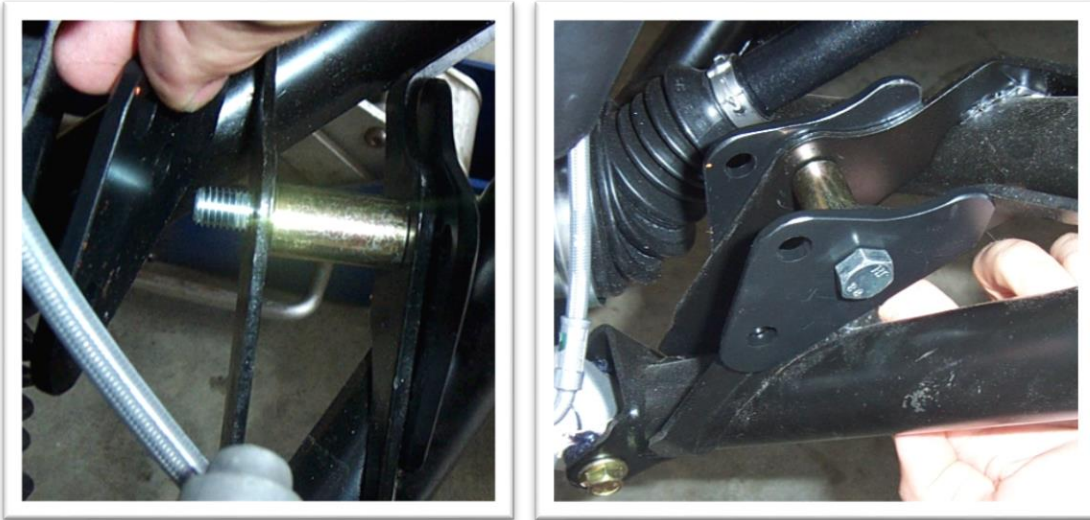
1. Place the transmission in park. Place a jack under the center of the UTV and lift until the rear wheels clear the ground. Be careful to support the UTV properly so that it is securely supported so that the suspension can droop to full extension.
2. Remove the rear wheels.
3. Disconnect and remove the shocks.
4. **Spring Spacer Installation:**
 - a. Repeat the same steps from the front installation to install the rear spring spacers (**53Z**).
5. **Rear Lift Bracket Installation:**
 - a) When installing the front lift brackets make sure to note the direction of the brackets.



- b) Place a rear lift bracket (**73V**) on the outside of the outer shock mount tab. Insert a (**10mmx60mm bolt**) through the bracket and into the shock mount tab. Place the spacer (**4Y**) between the shock mount tabs and push the bolt all the way through.



- c) Place another lift bracket (**73V**) on the outside of the inner shock tab and slide the bolt through. Attach with a (**10mm lock nut**).



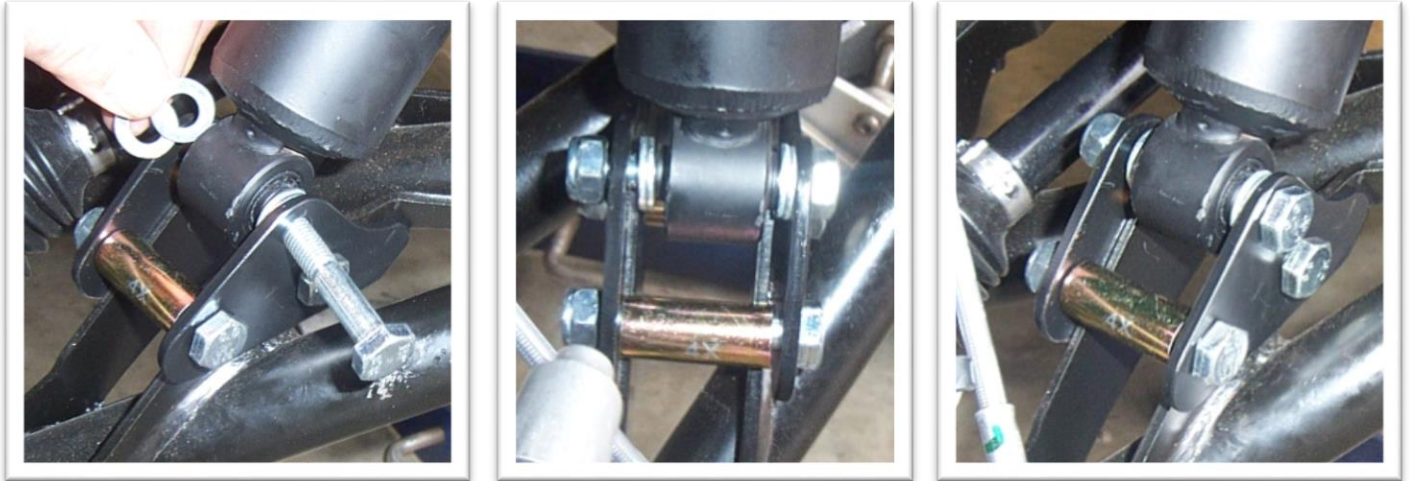
- d) At the lower bracket holes. Place the spacer (**4X**) between the shock mount tabs and push a (**10mmx60 bolt**) all the way through the shock tab and other lift bracket. Attach with a (**10mm lock nut**).



- e) Let the shock down to resting position. Insert one (**10x60mm hex bolt**) through the upper bracket hole. Then place two (**10mm flat washers**) between the shock eye and outer bracket. Insert the bolt through the bracket and into the shock eye.



f) Place two (10mm flat washers) between the shock eye and inner bracket. Slide the bolt all the way through and attach with a (10mm lock nut).



8. Repeat steps for the opposite side.



9. Place wheels back on the UTV and torque lugs to factory specifications.

Thank You
For Choosing
HIGHLIFTER

Read before Installation

This product is designed for use on ATVs and/or RUVs to increase ground clearance and fender clearance. Purchasers should be aware that use of this product may increase the frequency of required maintenance, part wear, and will raise the center of gravity on your ATV and/or RUV, increasing risk of roll-over, injury and death on all types of terrain. It is your responsibility to always inform other operators and passengers of this vehicle about the added risks.

High Lifter Products, products are designed to best fit users ATV/RUV under stock conditions. Adding, modifying, or fabricating any OEM or aftermarket parts will void warranty. High Lifter Products, products could interfere with other aftermarket accessories. If the user has aftermarket products on machine, contact High Lifter Products to verify that they will work together. Adding aftermarket suspension components and/or more aggressive tires can cause breakage of other OEM driveline components such as differentials, axles or drive shafts.

We recommend that wider tires and/or wheel spacers be used to achieve a wider stance and to improve stability of the ATV and/or RUV. Riders should be advised that the handling characteristics of a taller ATV and/or RUV are different and require extra care when riding, particularly on side hills or off-camber situations. If you further raise the center of gravity by adding taller tires, heavy loads to racks or seats, or by any other means, the ATV and/or RUV must be operated with even more care, at slower speeds and on relatively flat ground. All turns should be done at a slow speed, even on level ground.

Operation of an ATV and/or RUV with or without modified suspension components, while or shortly after consuming alcohol or drugs, subjects the rider to the risk of serious bodily harm or possible death. This risk is compounded if the rider does not wear an approved helmet and other safety gear. High Lifter urges that all approved safety gear be worn when riding an ATV and/or RUV as a driver or passenger.

By purchasing and installing High Lifter Products, products, user agrees that should damages occur, High Lifter Products will not be held responsible for loss of time, use, labor fees, replacement parts, or freight charges. High Lifter Products will not be held responsible for any direct, indirect, incidental, special, or consequential damages that result from any product purchased from High Lifter Products. The total liability of seller to user for all damages, losses, and causes of action, shall not exceed the total purchase price paid for the product that gives rise to the claim.

Dealers and other Installers

You are responsible for informing your customer and end user of the information contained above and the increased potential hazards of operating an ATV and/or RUV equipped with modified suspension components. If you install any suspension modifying components, it is your responsibility to also install the warning label prominently in view of the driver and in prominent view of the driver and passenger on RUVs and multi-passenger ATVs. They should also be instructed to notify anyone operating the vehicle, as well as any passengers, that said vehicle is modified.

As discussed above, it is critically important that they be instructed in the need for slower speed operation, regardless of terrain, after this lift kit is installed.



High Lifter Lifetime Warranty

From the beginning, High Lifter has engineered and manufactured some of the toughest, most durable products on the market. That's why this product comes with a Lifetime Warranty. It's our promise that High Lifter will never let you down.

- The **Lifetime Warranty** covers products sold to the original purchaser only and is not transferable. The term of the warranty is for the lifetime of the vehicle in question.
- Normal wear and tear items and finishes, such as, but not limited to: Heim joints, tie rod ends, ball joints, bearings, seals, bushings, bushing sleeves, zinc plating , powder coating, or chipping and discoloration of any finish is not covered.
- High Lifter will ship the replacement product after the returned product has been inspected by High Lifter staff.
- The warranty shall not include claims for damages, installation time or labor charges, economic losses, inconvenience, transportation, towing, down time, direct or indirect or consequential damages or delay resulting from any defect.
- The warranty does not apply to products that have been improperly applied or improperly installed.

Making a warranty claim

1. All claims must be accompanied by the part and the original sales receipt or other acceptable proof of purchase from the original owner.
2. All warranties must be accompanied with a Return Merchandise Authorization (RMA) number. (Contact High Lifter at 318-524-2270 or 800-699-0947 for an RMA number)
3. When shipping the damaged product:
 - a. Write the RMA number on the outside of the box.
 - b. Also include the RMA number, proof of purchase and any notes inside the box.
 - c. Please keep your tracking number and shipment information.
4. The customer is responsible for shipping the product to High Lifter--return shipping within the lower 48 states will be paid by High Lifter products. With all warranty claims, only standard shipping services apply.
5. High Lifter will process your order within 24 business hours of receiving the returned item.
6. **Ship to:** High Lifter Products, 780 Professional Drive North, Shreveport, Louisiana 71105