

# General 1000 Seizmik Fender Flare Manual

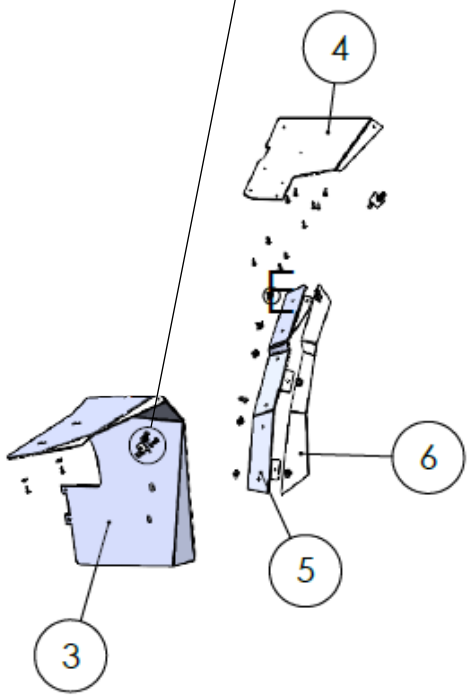
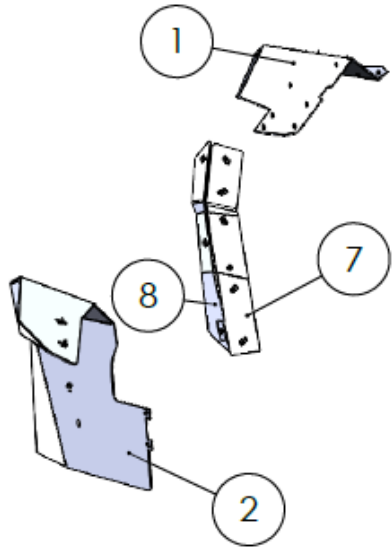
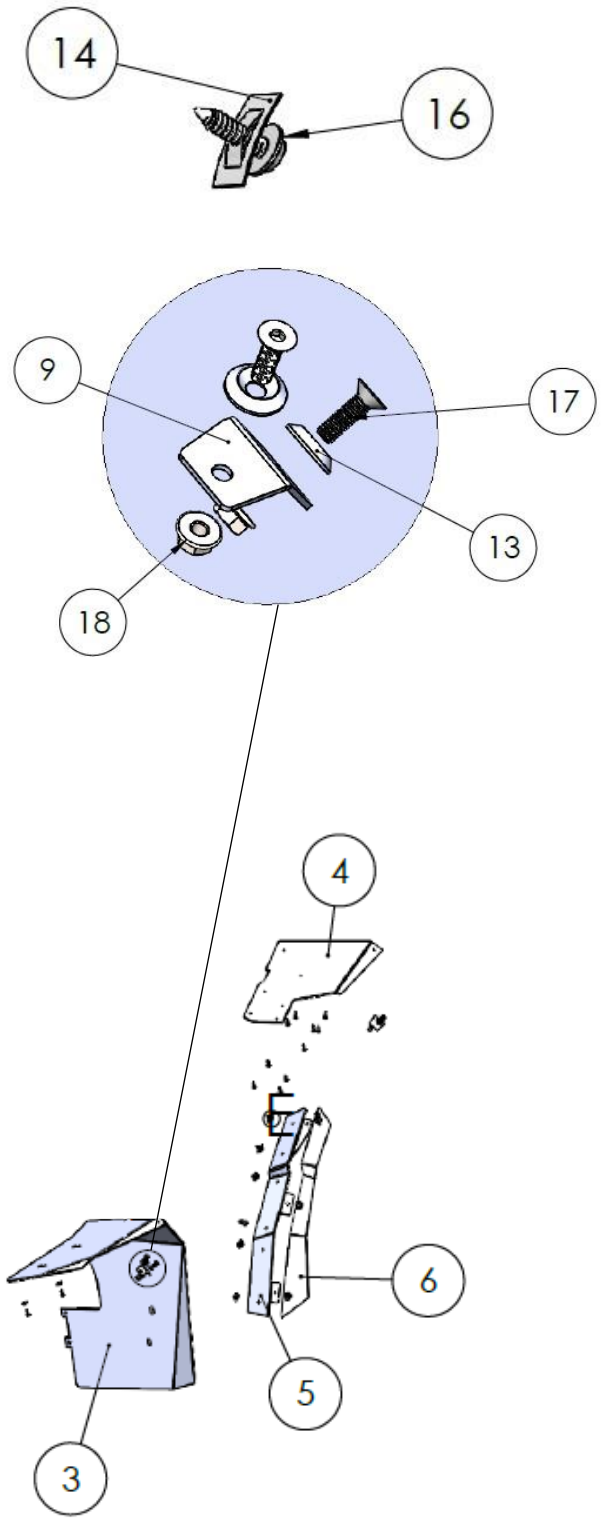
## Part # 67-10008



Always observe the warnings and precautions in this manual when using your Seizmik products. For best results, carefully follow the instructions in this manual and make no modifications.

If you have any questions, comments, need assistance, or are missing parts, please call 1-866-838-3366 between 9:00AM and 5:00PM EST. You can email us at [support@seizmik.com](mailto:support@seizmik.com)

ITEM NO.	Description	PART #	QTY.
1	SP_FF05_P1_01 Pass Rear Fender	67-10028	1
2	S_FF05_P2_03 Pass Front Fender	67-10024	1
3	SP_FF05_P3_03 Driv Front Fender	67-10025	1
4	SP_FF05_P4_01 Driv Rear Fender	67-10029	1
5	SP_FF05_P5_02 Driv Mid Inner Fender	67-10026	1
6	SP_FF05_P6_02 Driv Mid Outer Fender	67-10027	1
7	SP_FF05_P7_02 Pass Mid Inner Fender	67-10023	1
8	SP_FF05_P8_02 Pass Mid Outer Fender	67-10030	1
9	SP_FF05_B1_01 Driv Front Bracket	67-10032	1
10	SP_FF05_B2_01 Driv Rear Bracket	67-10034	1
11	SP_FF05_B3_01 Pass Front Bracket	67-10031	1
12	SP_FF05_B4_01 Pass Rear Bracket	67-10033	1
13	Countersunk Washer	54-96019	14
14	Push Nut	54-96013	14
15	Plastic Push Rivet	54-96010	2
16	M5x20mm Sheet Metal Screw	54-96011	38
17	M6x20mm Countersunk Bolt	54-96012	14
18	M6 Hex Flange Nut	54-960135	16
19	Hex Flange Screw M6x20mm	99-10007	2

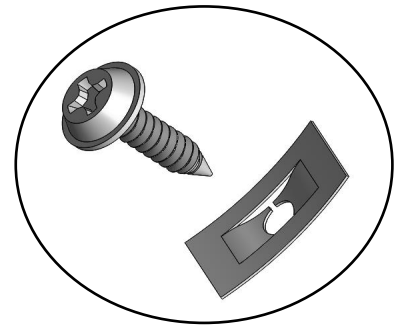


Always observe the warnings and precautions in this manual when using your Seizmik products. For best results, carefully follow the instructions in this manual and make no modifications.

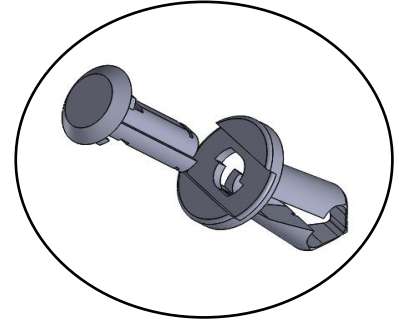
If you have any questions, comments, need assistance, or are missing parts, please call 1-866-838-3366 between 9:00AM and 5:00PM EST. You can email us at [support@seizmik.com](mailto:support@seizmik.com)



Screw directly into vehicle body,  
may or may not back with push nut



Use a 3/8" drill bit to drill into body of your  
vehicle and install push rivet



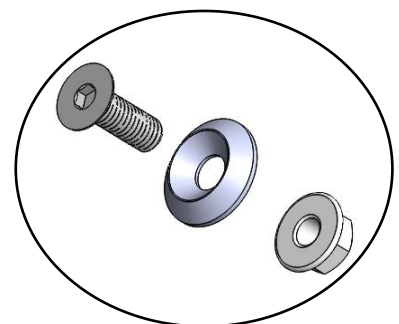
Metal Bracket, go to page 4



Remove stock fastener and re-install with fender flare

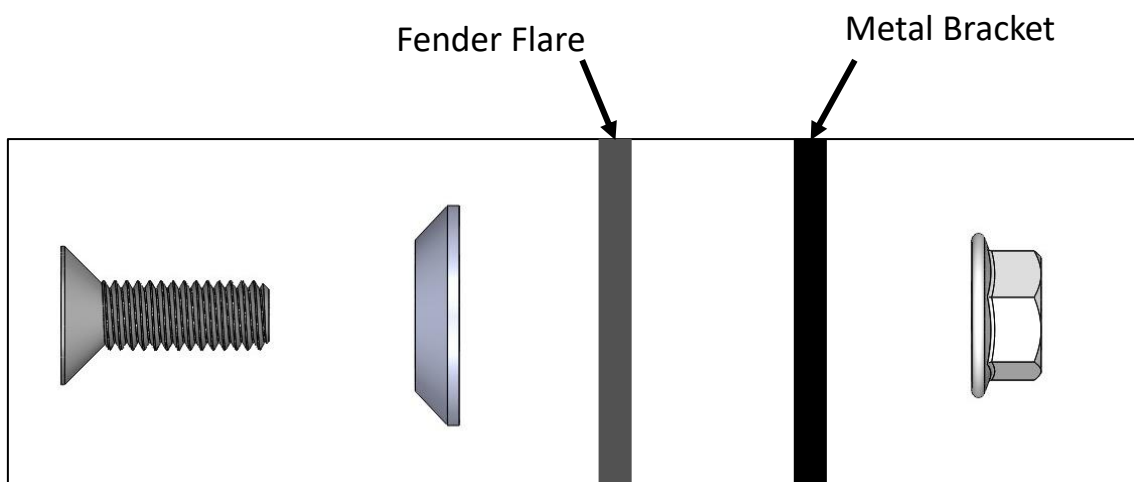
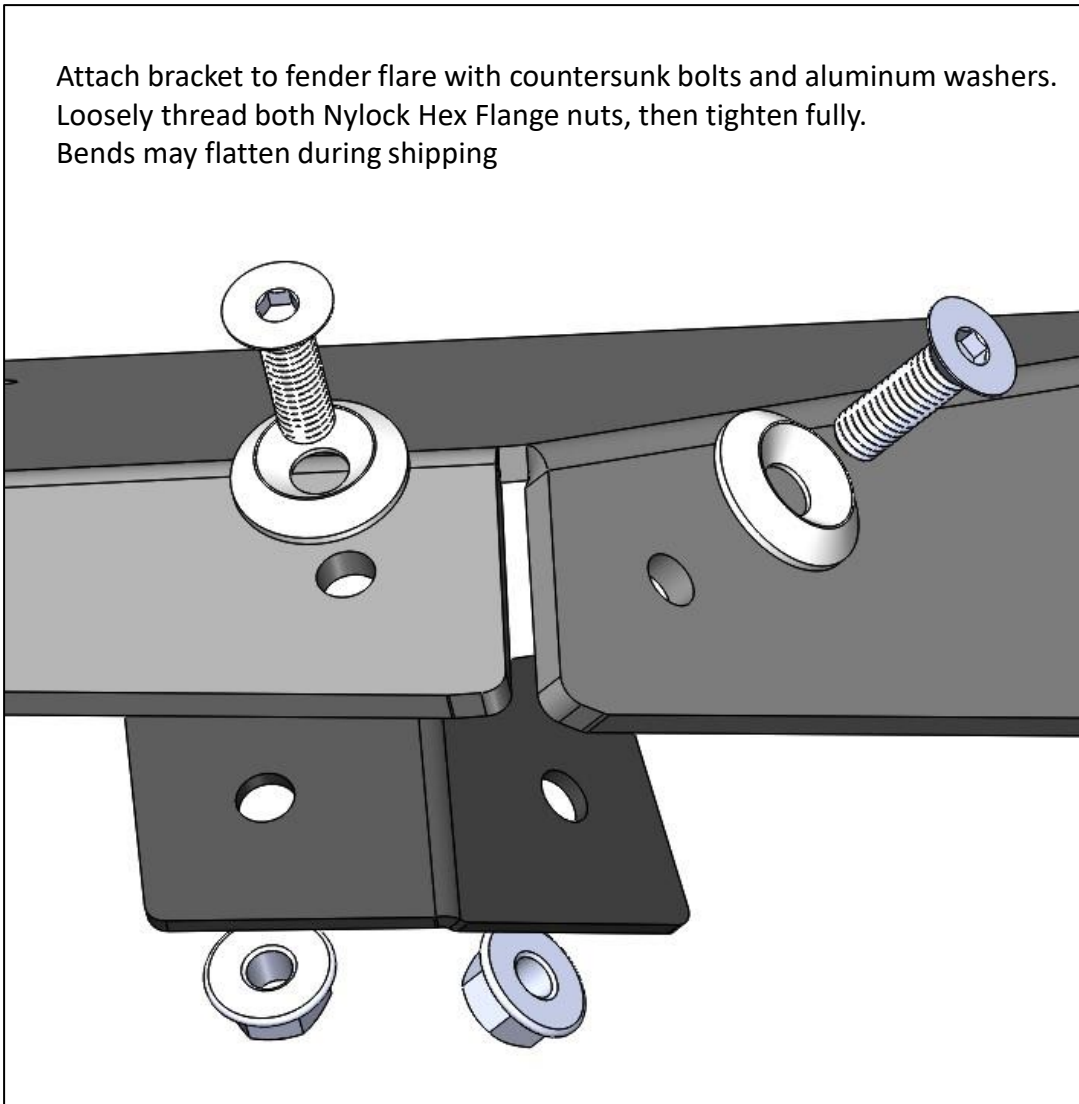


Install a countersunk bolt, washer,  
and M6 nut



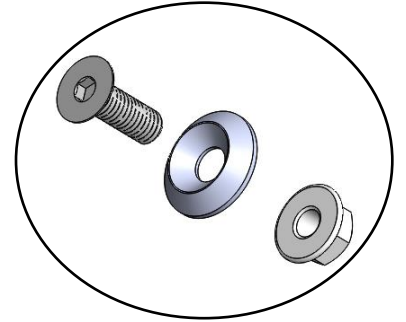
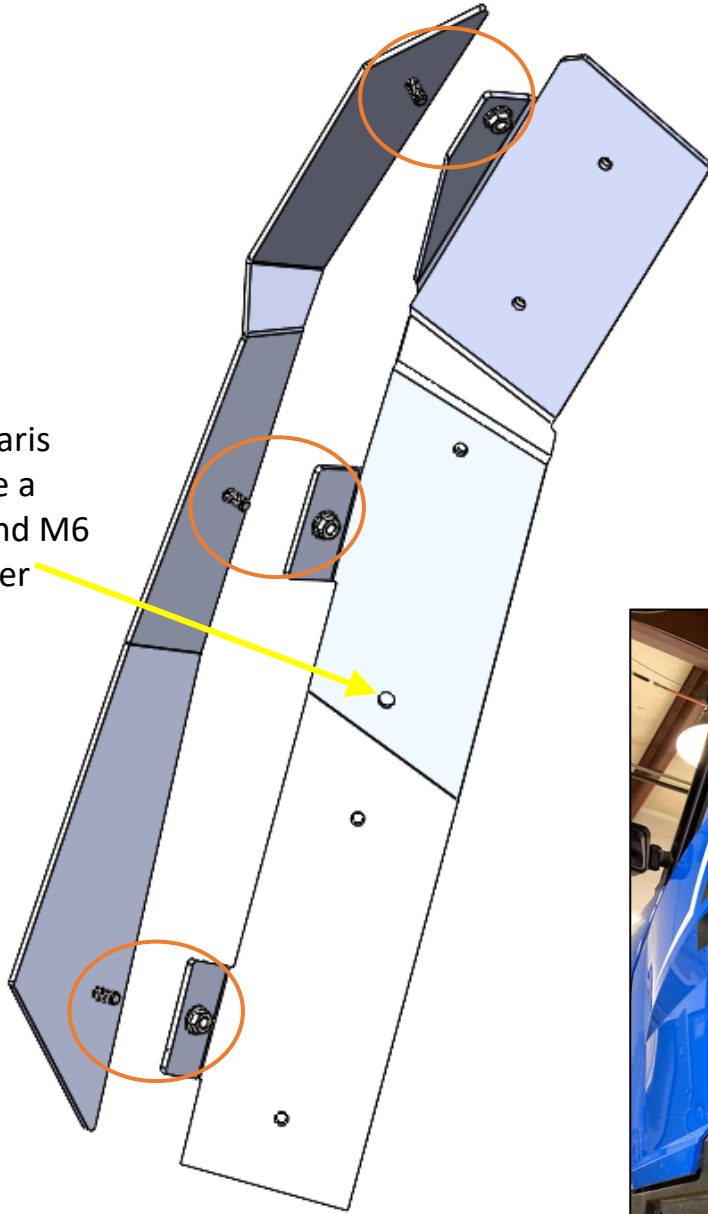
## Install all brackets

Attach bracket to fender flare with countersunk bolts and aluminum washers. Loosely thread both Nylock Hex Flange nuts, then tighten fully. Bends may flatten during shipping



## Middle Fender

Then, remove Polaris push rivet and use a M6x20mm bolt and M6 nut to install fender

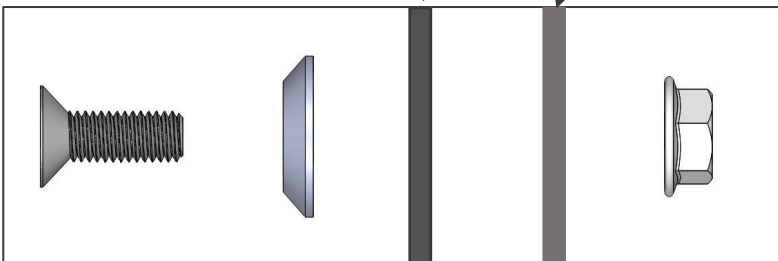


To start, connect side inner flare to side outer flare.

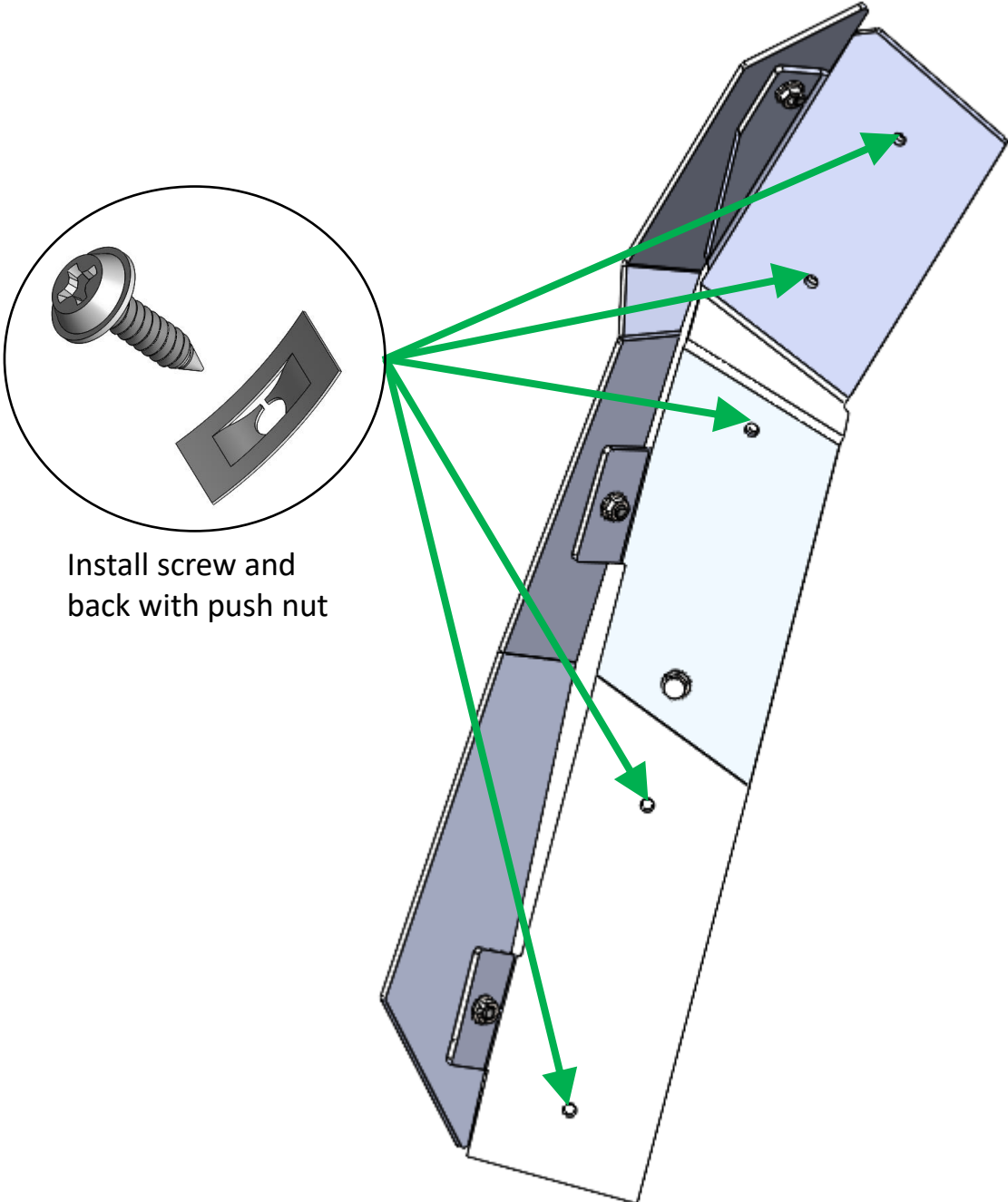


Outer Side Flare

Inner Side Flare



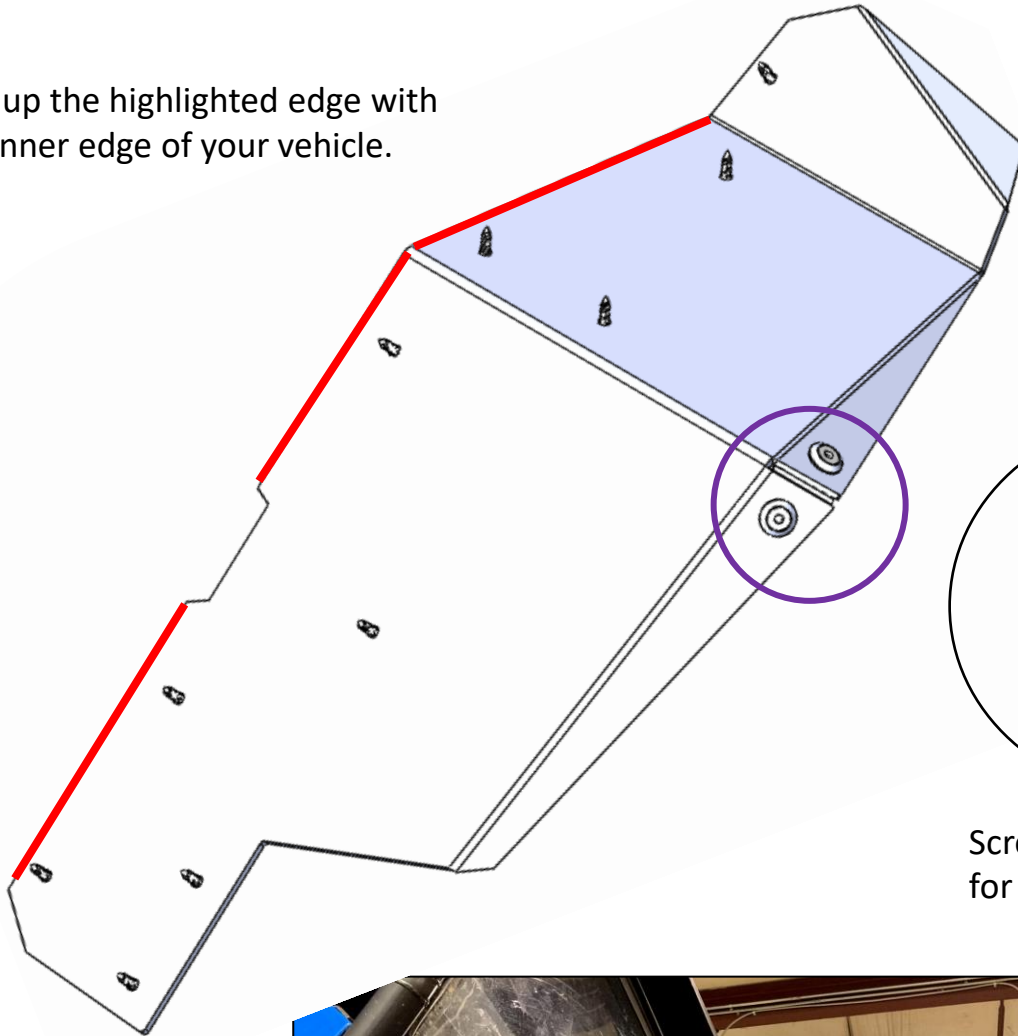
**Middle Fender**



Install screw and  
back with push nut

## Rear Fender

Line up the highlighted edge with the inner edge of your vehicle.



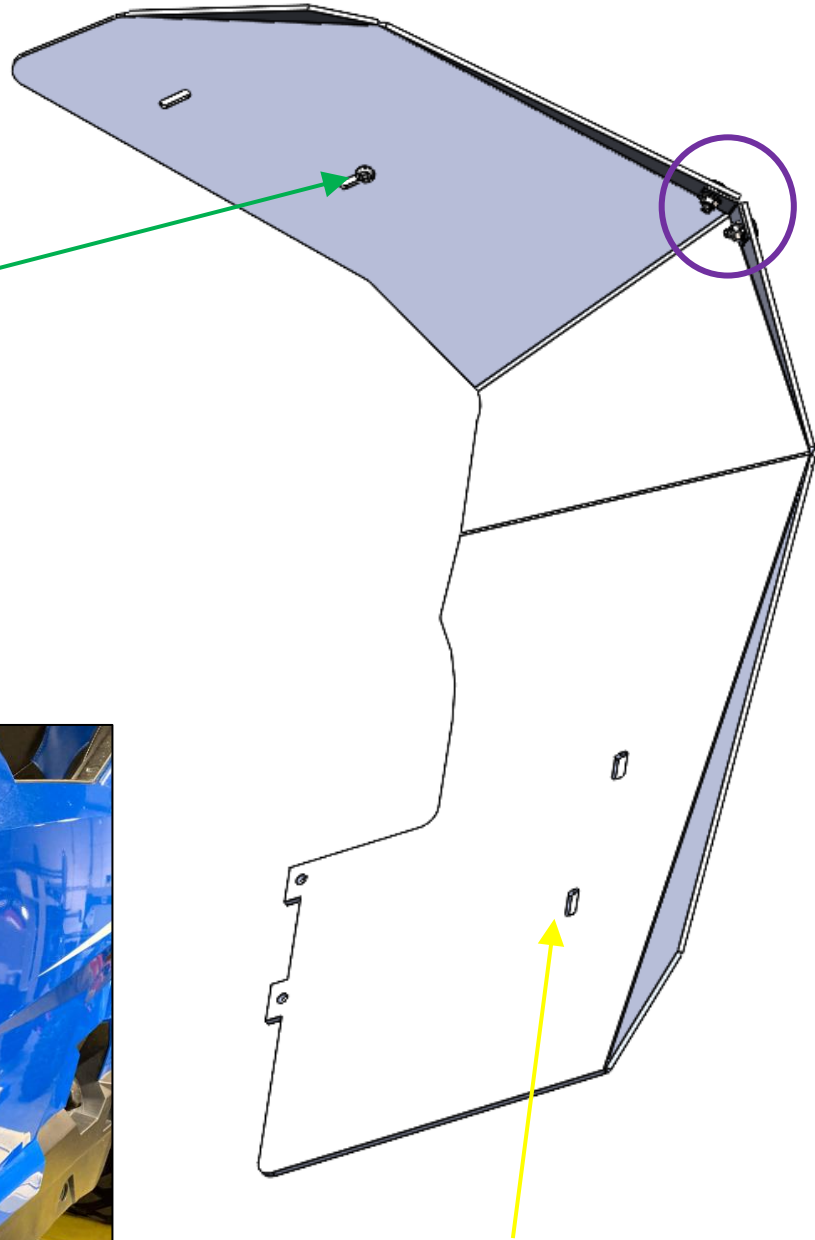
Screw directly into body for each hole location



## Front Fender



Then, adjust fender to desired coverage and install screw, back with push nut



First, remove Polaris bolt from vehicle, install front fender with Polaris bolt.



## Front Fender

